

Motorized Slide

Simple, Precise and Powerful Torch Position Control



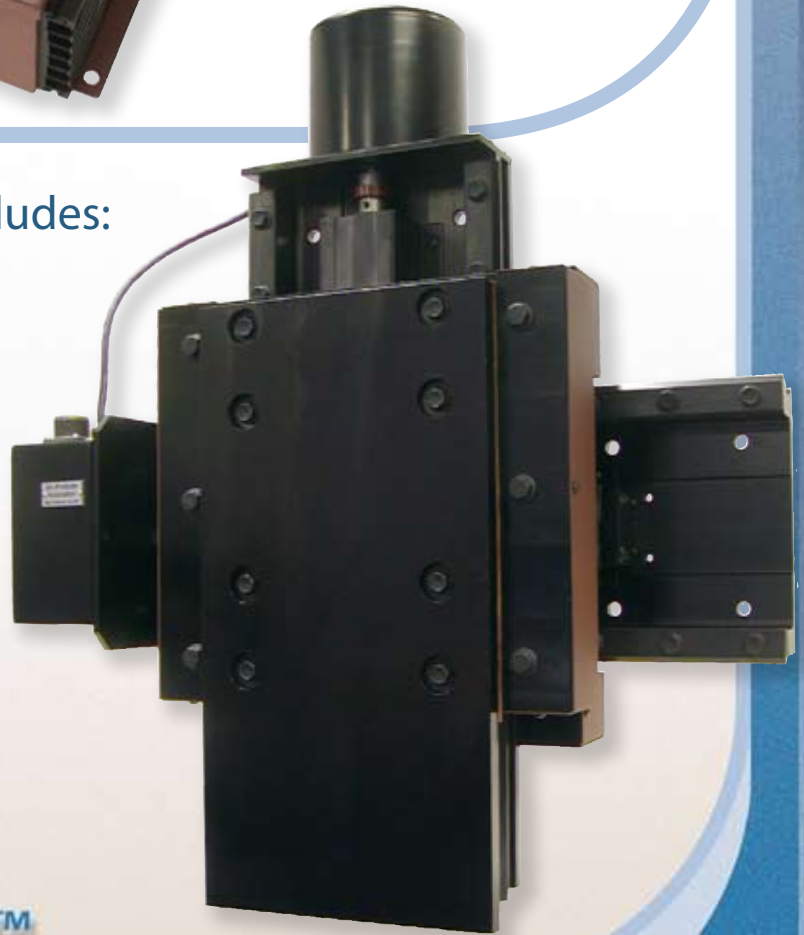
AP Automation's compact motorized cross-slide assembly provides precision vertical and horizontal torch control.

Motorized slide system includes:

- *joystick pendant*
- *advanced control unit*
- *extremely rugged two-axis cross slide*

Used in MIG, Sub-Arc, and TIG welding applications in these typical industries:

- *Tank, cylinder and pressure vessels*
- *Beam and structural assemblies*
- *Pipe and tubing fabrication*



Automation™

1245 30th Street
San Diego, CA 92154

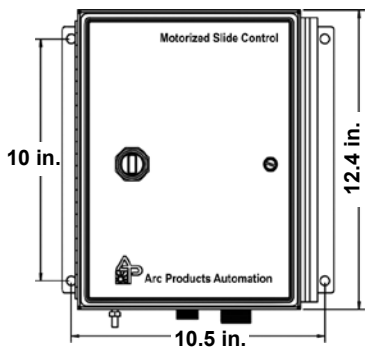
www.ap-automation.com

1-800-770-0063

Local: 619-628-1022 Fax: 619-628-1028

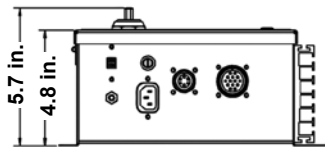
Control Unit & Pendant

The AP Automation motorized slide control unit is housed in a single heavy-gauge steel enclosure. Interface cables are mounted on the underside of the cabinet. System comes with a control, pendant and interconnect cables. Customer specifies cross slide weight capacity and stroke length.



CONTROL UNIT

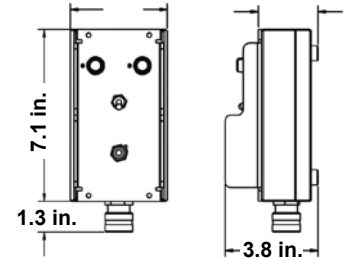
- Net Weight 27 lbs.
- 115 or 230 V 50/60 Hz



Compatible with all three Arc Products Automation cross slides, as well as the three Cyclomatic™ cross slides.

PENDANT

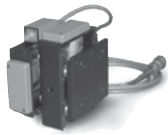
Housed in heavy-duty, lightweight aluminum (1.8 lbs), designed for either hand-held or mounted applications. The pendant features:



- Independent Horizontal and Vertical axis speed adjustments from two potentiometers
- A High / Low Speed Switch to allow the operator to instantly change horizontal and vertical speeds from a user-defined slower setting to full speed
- Joystick control for manual slide / torch positioning

If seam tracking functions are desired in the future, the cross slide assembly does not need to be upgraded. Only a Seam Tracking System Control Kit (without cross slide assembly) is required.

Cross Slides

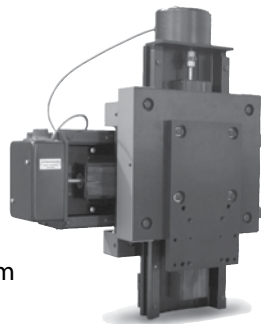


ST40

Weight Capacity:
40 lbs. at 6" from plate
Drive Strokes Available:
3" x 3" and 6" x 6"
Travel Speed: 24 ipm
Drive System: DC Motors

ST250

Weight Capacity:
250 lbs. at 12" from plate
Drive Strokes Available:
5" x 5" and 10" x 10"
Travel Speed: 32 ipm
Drive System: DC Motors

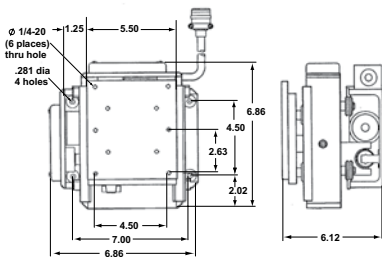


ST450

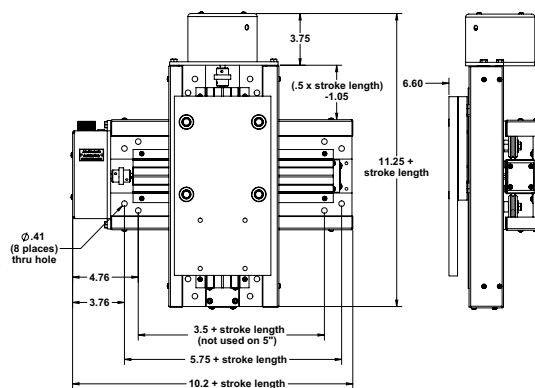
Weight Capacity:
450 lbs. at 24" from plate
Drive Strokes Available:
5" x 5" and 10" x 10"
Travel Speed: 17 ipm
Drive System: DC Motors



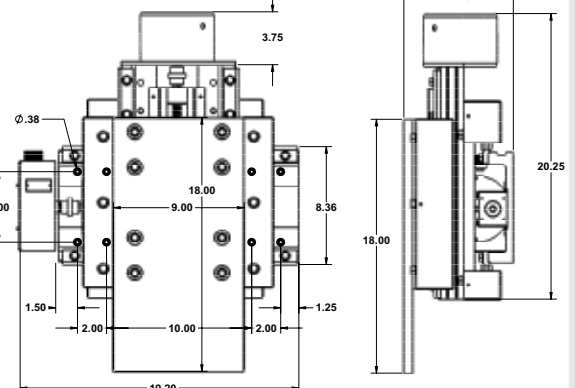
ST 40 3x3



ST 250



ST 450 5x5



Call 1-800-770-0063 or email sales@arc-products.com

Motorized Slide

Simple, Precise and Powerful Torch Position Control



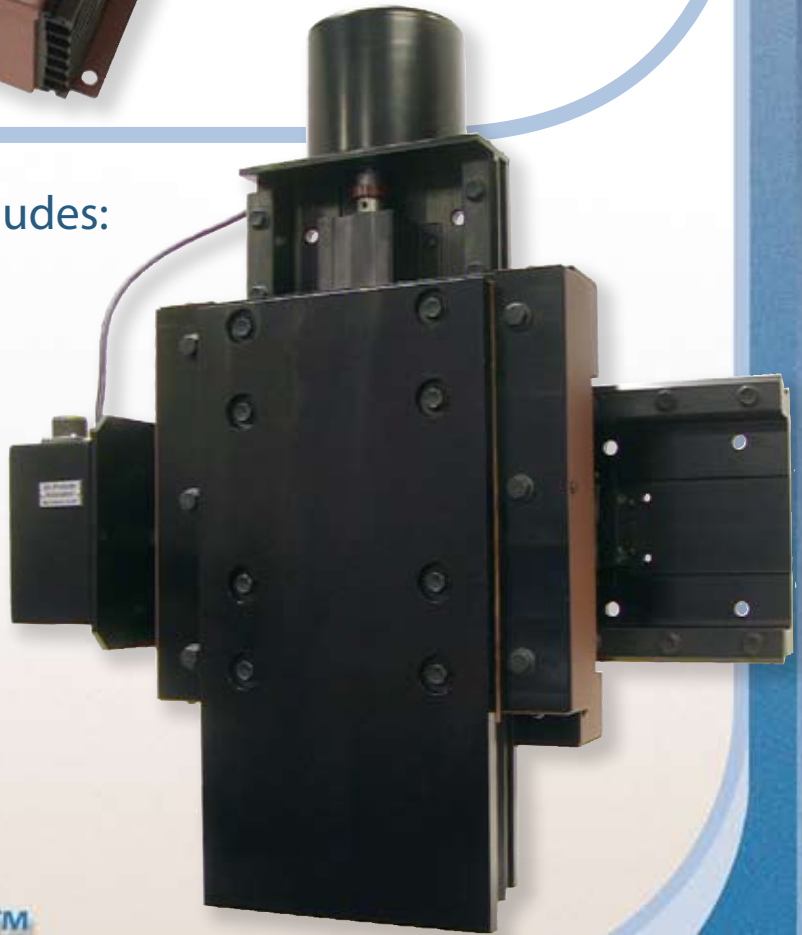
AP Automation's compact motorized cross-slide assembly provides precision vertical and horizontal torch control.

Motorized slide system includes:

- *joystick pendant*
- *advanced control unit*
- *extremely rugged two-axis cross slide*

Used in MIG, Sub-Arc, and TIG welding applications in these typical industries:

- *Tank, cylinder and pressure vessels*
- *Beam and structural assemblies*
- *Pipe and tubing fabrication*



Automation™

1245 30th Street
San Diego, CA 92154

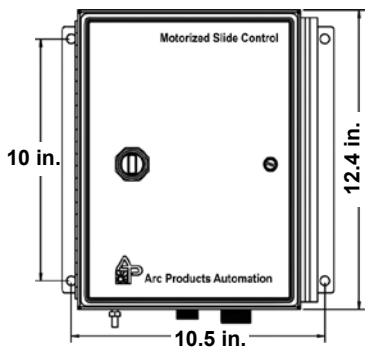
www.ap-automation.com

1-800-770-0063

Local: 619-628-1022 Fax: 619-628-1028

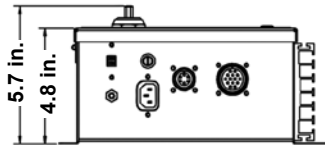
Control Unit & Pendant

The AP Automation motorized slide control unit is housed in a single heavy-gauge steel enclosure. Interface cables are mounted on the underside of the cabinet. System comes with a control, pendant and interconnect cables. Customer specifies cross slide weight capacity and stroke length.



CONTROL UNIT

- Net Weight 27 lbs.
- 115 or 230 V 50/60 Hz

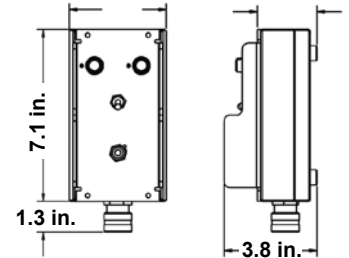


Compatible with all three Arc Products Automation cross slides, as well as the three Cyclomatic™ cross slides.

If seam tracking functions are desired in the future, the cross slide assembly does not need to be upgraded. Only a Seam Tracking System Control Kit (without cross slide assembly) is required.

PENDANT

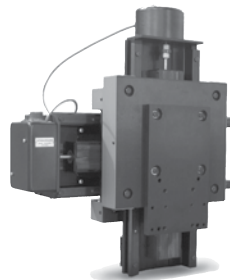
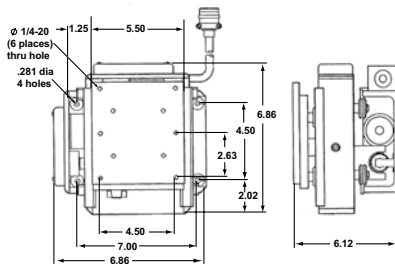
Housed in heavy-duty, lightweight aluminum (1.8 lbs), designed for either hand-held or mounted applications. The pendant features:



- Independent Horizontal and Vertical axis speed adjustments from two potentiometers
- A High / Low Speed Switch to allow the operator to instantly change horizontal and vertical speeds from a user-defined slower setting to full speed
- Joystick control for manual slide / torch positioning

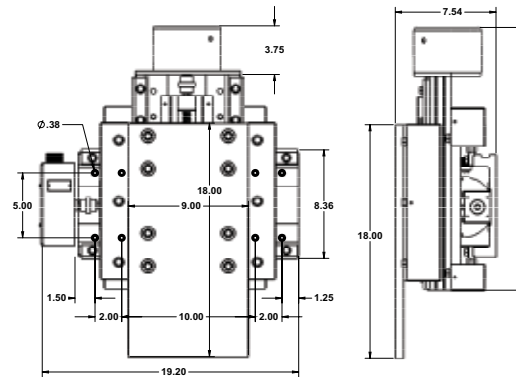
Cross Slides

ST 40 3x3



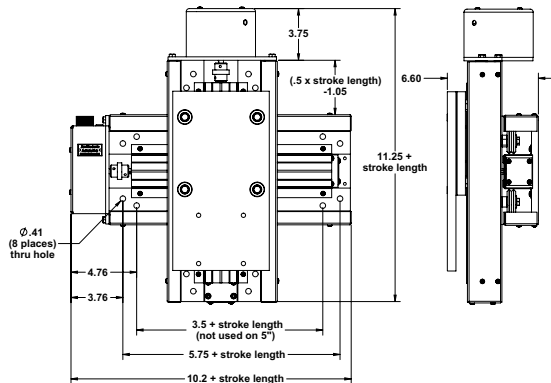
ST250
Weight Capacity:
 250 lbs. at 12" from plate
Drive Strokes Available:
 5" x 5" and 10" x 10"
Travel Speed: 32 ipm
Drive System: DC Motors

ST 450 5x5



ST40
Weight Capacity:
 40 lbs. at 6" from plate
Drive Strokes Available:
 3" x 3" and 6" x 6"
Travel Speed: 24 ipm
Drive System: DC Motors

ST 250 10 x 10



ST450
Weight Capacity:
 450 lbs. at 24" from plate
Drive Strokes Available:
 5" x 5" and 10" x 10"
Travel Speed: 17 ipm
Drive System: DC Motors



Call 1-800-770-0063 or email sales@arc-products.com