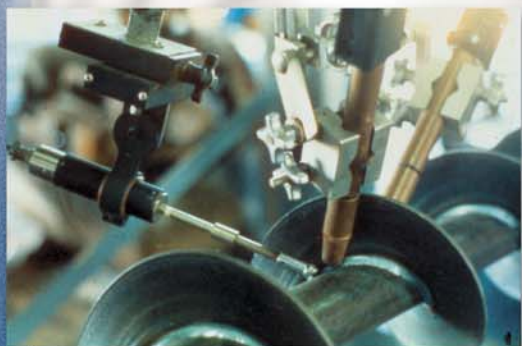


Seam Tracking

Automated, Precise Tracking of Weld Joints

**AP Automation
Seam Tracking Systems
combine the latest technology with rugged,
proven design.**

Seam Tracking provides automated tracking of weld joints to compensate for irregularities and moving joint profiles.



Grain Elevator Augur

One seam tracker positions two MIG torches on each side of the flight to weld the two sides simultaneously as the augur turns on a lathe.

Used in MIG, Sub-Arc, and TIG welding applications in these typical industries:

- **Tank, Cylinder and Pressure Vessels**
- **Beam and structural assemblies**
- **Pipe and tubing fabrication**



Automation™

1245 30th Street
San Diego, CA 92154

www.ap-automation.com

1-800-770-0063

619-628-1022 Fax: 619-628-1028

Two Control Packages

Advanced Programming Control



The STC-301 features advanced engineering that makes it rugged, and easy to set up, interface, operate and service. Microprocessor-based controls allow the operator to preprogram up to 19 independent weld jobs and to switch easily between them. With the APC, the Seam Tracking Sensor will automatically find the weld joint and control the entire weld cycle for position-based or time-based welding.



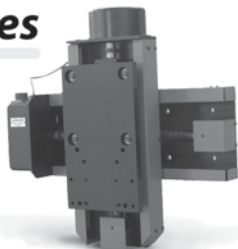
Standard

The AP Automation STC-300 Standard control unit is the more affordable solution when the advanced features of the STC-301 are not needed for your application. The STC-300 has joystick control in manual mode and full seam tracking ability in automatic mode. Should your requirements change, the STC-300 can easily be upgraded with an APC Option Kit.

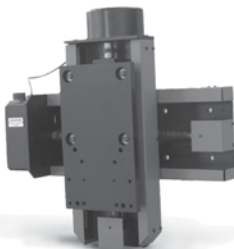
Five Cross Slides



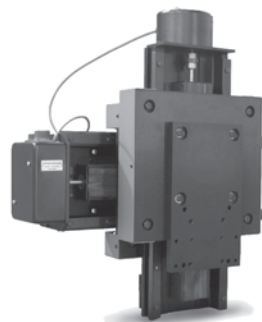
ST40
Weight Capacity:
 40 lbs. at 6" from
 adapter plate
Drive Strokes
Available:
 3" x 3" and 6" x 6"
Travel Speed: 24 ipm.
Drive System:
 DC Motors



ST150
Weight Capacity:
 150 lbs. at 12" from plate
Drive Strokes
Available:
 5" x 5" and 10" x 10"
Travel Speed: 32 ipm.
Drive System: DC
 Motors with Vertical
 Axis Brake



ST250
Weight Capacity:
 250 lbs. at 12" from plate
Drive Strokes
Available:
 5" x 5" and 10" x 10"
Travel Speed: 32 ipm.
Drive System: DC
 Motors with Vertical
 Axis Brake



ST350
Weight Capacity:
 350 lbs. at 24" from plate
Drive Strokes
Available:
 5" x 5" and 10" x 10"
Travel Speed: 22 ipm.
Drive System: DC
 Motors with Vertical
 Axis Brake



ST450
Weight Capacity:
 450 lbs. at 24" from plate
Drive Strokes
Available:
 5" x 5" and 10" x 10"
Travel Speed: 17 ipm.
Drive System: DC
 Motors with Vertical
 Axis Brake

Seam Sensor and Tips



The Seam Sensor tracks the weld joint by responding to probe tip movements enabling the motorized cross slides to maintain a ± 0.005 in. accuracy in aligning the welding torch with the weld joint. This design proves superior in accuracy and durability when compared to switches or sliding contacts used in other systems. A wide variety of probe tips are available. Custom-made tips and extensions can also be manufactured for tracking a joint unique to your part.

Standard Sensor Tips



Extension Tip



Special Sensor Tips



Call 1-800-770-0063

E-mail sales@arc-products.com, service@arc-products.com